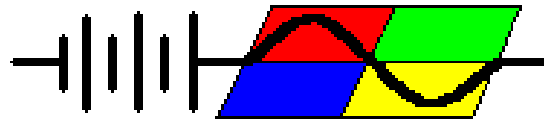


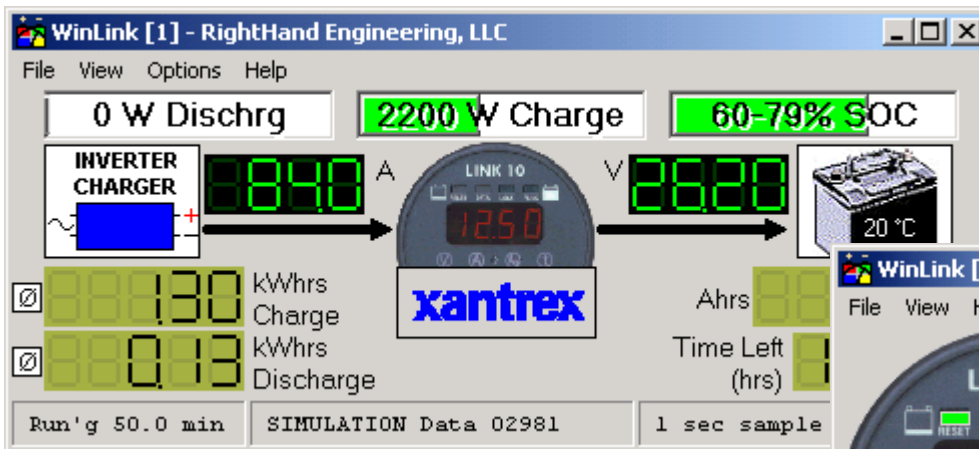
# RightHand Engineering, LLC

WinLink™

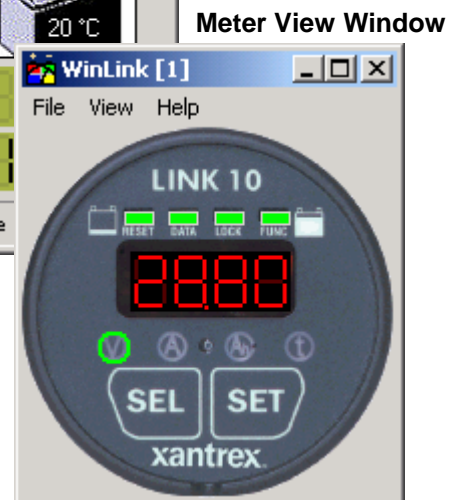
WinLink™ is Windows®-based PC software that works with the Xantrex Link-10 Choice battery state-of-charge meter (formerly the Cruising Equipment E-Meter) to continually monitor and display the meter status while providing the user with data logging.



Designed for the Xantrex Link-10 State-of-Charge meter



Full View Window



Meter View Window

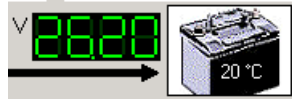
Feature	Benefit
<ul style="list-style-type: none"> <li>Displays all readings on a single screen. Graphical images indicate power routing.</li> </ul>	<ul style="list-style-type: none"> <li>You see the present condition of your system at a glance.</li> </ul>
<ul style="list-style-type: none"> <li>Calculates watts, Kilowatt-hours, and charge cycle efficiency.</li> </ul>	<ul style="list-style-type: none"> <li>You see information that is not readily obtained from the meter itself.</li> </ul>
<ul style="list-style-type: none"> <li>Optional display of State-of-Charge and Time Remaining information. Customizable source ICON.</li> </ul>	<ul style="list-style-type: none"> <li>Window can be tailored to either state-of-charge or DC charging applications (such as Photo Voltaics or Wind Generators).</li> </ul>
<ul style="list-style-type: none"> <li>Keeps a history of system events such as state-of-charge changes.</li> </ul>	<ul style="list-style-type: none"> <li>You can see events that occurred while unattended.</li> </ul>
<ul style="list-style-type: none"> <li>Outputs to file the accumulated hourly readings every day.</li> </ul>	<ul style="list-style-type: none"> <li>You can see &amp; compare past system performance using a spread-sheet.</li> </ul>
<ul style="list-style-type: none"> <li>Optional Meter View.</li> </ul>	<ul style="list-style-type: none"> <li>You can see exactly what the meter's front panel is displaying.</li> </ul>
<ul style="list-style-type: none"> <li>Password protected lock option.</li> </ul>	<ul style="list-style-type: none"> <li>Prevents unauthorized users from changing program settings or exiting.</li> </ul>
<ul style="list-style-type: none"> <li>Supports running two copies.</li> </ul>	<ul style="list-style-type: none"> <li>You can see the status of two meters on a single PC.</li> </ul>
<ul style="list-style-type: none"> <li>Evaluation mode.</li> </ul>	<ul style="list-style-type: none"> <li>Lets you try the software before purchasing</li> </ul>
<ul style="list-style-type: none"> <li>Simulation mode.</li> </ul>	<ul style="list-style-type: none"> <li>Evaluate or demonstrate the software without being connected to live meters.</li> </ul>

## Communications

*WinLink* continually reads voltage, amperage, ampere-hour, temperature (optional) and state-of-charge information from the connected meter.

The program receives meter data once a second providing up-to-date information continuously.

## Graphical Display



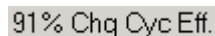
*WinLink* displays a graphic image of power routing. Thus at a glance

you can see whether you are charging or discharging.

## Calculated Values



The program also interprets other useful information from the meter readings. From volt and amp readings it calculates watts. From elapsed time it calculates kilowatt-hours.



If desired, *WinLink* can separately display charge vs. discharge information also showing the charge cycle efficiency at the end of the charge cycle.

## Evaluation Mode

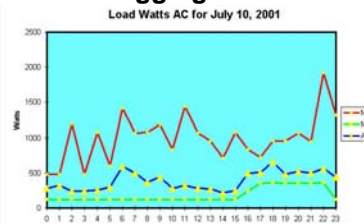
*WinLink* can be run in an evaluation mode allowing you to try the software before purchasing. The evaluation software can be

turned into fully functional software by on-line payment and an emailed Upgrade ID (see web site at bottom of page for details). Evaluation mode allows basic monitoring features for a single device, as well as full featured simulation.

## Simulation Mode

The program allows you to simulate operation just as if it were connected to a live meter. You are able to simulate meter reading changes by clicking on particular screen elements. This allows for even more detailed evaluation and greatly assists in demonstrations.

## Data Logging



As long as *WinLink* is running it is able to accumulate and record readings from the

system. The program writes a log file every day at midnight. This contains the minimum, maximum and average data of every hour for every value displayed by the program.

Instructions included in the program's electronic manual give you detailed step-by-step instructions on how to import these data files into Microsoft's Excel spreadsheet program.

---

## PC System Requirements

- Processor: Pentium or equivalent minimum.
- Processor Speed: 166 MHz or better for 1 meter, 233 MHz or better for 2 meters.
- Operating System: Windows® 98 SE or later.
- Pointing Device: required.
- Video Display: 640 x 480 pixel (VGA) or better, color recommended.
- RAM Memory: 128 MB or more.
- Removable Disk: Multi-read CD-ROM drive.
- Fixed Disk Memory: 10 MB of free space minimum plus 1 MB per month for daily logs.
- Serial Ports: One free RS-232 port (9-pin recommended) per running copy, or a USB port with a RS-232-to-USB converter.

## Equipment Requirements

- Xantrex Link-10 Choice model (equipped with a 9-pin serial data port).
- Meter firmware revision E1.3 (serial number 005000) or later.

Windows® is a registered trademark of Microsoft Corporation